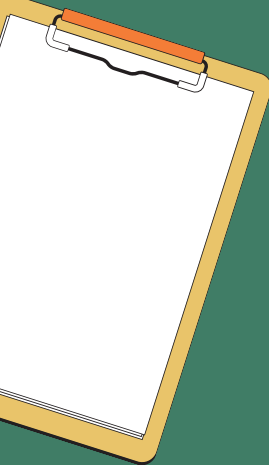




Candle Terminologies

Website - www.vcandlesupplies.com





Term	Definition
CT	Cold Throw. The strength and quality of fragrance in a candle before lighting. It indicates how much scent is released when the candle is unlit.
HT	Hot Throw. The strength and quality of fragrance in a candle when it is lit. It indicates how well the scent is distributed when the candle is burning.
FP	Flash Point. The temperature at which a liquid can ignite from a spark or flame. It is important for shipping liquids such as fragrance oils.
MP (Melt Pool)	The liquefied wax around a burning wick, measured in width and depth.
MP (Melt Point)	The temperature at which wax melts. Lower melting point waxes are preferred for container candles.
FMP	Full Melt Pool. A molten, liquefied area of wax that reaches across the entire surface of the container.
FO	Fragrance Oil. Synthetic or natural oil that adds fragrance to candles.
EO	Essential Oil. Natural oil derived from plants that add fragrance to candles.
Fragrance Load	The amount of fragrance that a given wax can hold.
Wick Up	A process of using a larger wick to achieve proper burning in certain wax and fragrance combinations.
Wick Down	A process of using a smaller wick to achieve proper burning in certain wax and fragrance combinations.
Under Wicked	The use of a wick that is too small for a candle, resulting in poor burning and fragrance throw.



[Website - www.vcandlesupplies.com](http://www.vcandlesupplies.com)



Term	Definition
Over Wicked	The use of a wick that is too large for a candle, resulting in high heat and poor burning.
Primed Wick	A wick with a wax coating and a chemical treatment applied to enhance burning properties.
Unprimed Wick	A wick without a wax coating, allowing for customization of the coating.
Wick Assembly	The process of cutting a wick to length and attaching it to a wick tab.
Wick Tab	A metal piece crimped onto a wick that allows the wick to be attached to a container. It can also be sealed to prevent excessive wax consumption at the end of the candle's life.
Para soy	A blend of paraffin and soy waxes.
Vybar	A wax additive that can enhance fragrance hold. Adding too much Vybar can negatively affect fragrance throw.
Wet Spot	An air pocket that forms between the wax and jar wall, creating a noticeable gap.
Frosting	A white or lighter-colored appearance on the surface of soy wax, caused by crystallization.
Finger Nailing	A half-moon or crescent-shaped pattern on paraffin pillar wax.
Air Pocket	An air bubble or pocket that forms in the wax near the surface or around the wick as it cools.
Dancing Flame	An unsteady or flickering flame caused by air currents.
Cure (Wax)	The process of allowing a candle to sit undisturbed to complete the crystallization of vegetable waxes, resulting in different burning and fragrance properties.

[Website - www.vcandlesupplies.com](http://www.vcandlesupplies.com)

